



## Custom Solutions for Public Health

### Mission

Gensa Corporation develops computer-based systems that enable our clients to provide world-class service and products to their clients. Gensa assists clients in bringing products and services to market faster, better and more efficiently. Our mission is to turn systems into value. Gensa has successfully developed custom web based applications for Federal and state public health agencies as well as non-profits.

### Expertise

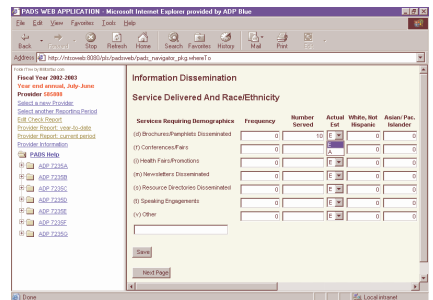
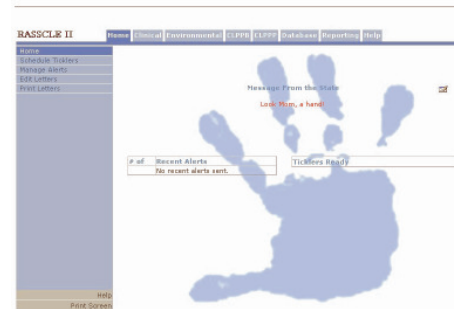
**Computer Software Development and Integration-** Gensa designs and develops and integrates systems based on Microsoft, Oracle and Java architectures.

### Award Winning Projects

- Gensa projects teams have contributed to several award-winning projects.
- Best of California Awards**
- Best Application Serving an Agency's Business Needs - Fraud Integrated Database
- Best IT Collaboration Among Organizations - Statewide Integrated Traffic Records System
- NASIRE Recognition Awards Nominee** - Motor Carrier Permit System
- Government Tech West Best Solution** - Motor Carrier Permit System

### Dun & Bradstreet Open Ratings

- Dun & Bradstreet Open Ratings subsidiary completed a survey of Gensa clients and reported the following ratings.
- 100% in Reliability
  - 100% in Customer Support
  - 100% in Business Relations



Gensa Corporation is a veteran owned small business and is a California Certified Small Business.

**We Work Smarter and Harder**

Gensa Corporation  
Suite 105  
2870 Gateway Oaks Drive  
Sacramento, Ca 95833  
916 564 0103  
www.gensa.com  
Email: busdev@gensa.com

---

## Representative Solutions

### California Dept of Health Services - Response and Surveillance System for Childhood Lead Exposures

The Project - RASSCLE II provides a single statewide system for managing public health and environmental data relevant to Lead Poisoning in Children. RASSCLE II allows State and county personnel to effectively share case management information among all California county public health agencies and improve reporting to CDC

RASSCLE II is based on a PHIN compliant logical data model and processes HL7 messages from laboratories. RASSCLE II is an n-tier system based on Microsoft .Net architecture and SQL Server. Reports were developed with Business Objects.

**Gensa Contribution** - Gensa designed and developed the application, the physical database and the reports.

### University of California, San Francisco Medical Center (UCSF)

The Project - UCSF was to developing a paperless/web-based Institutional Review Board/ Institutional Animal Care and Use Committee system that shall result in an automated compliance process. The system would automate the processing of approvals for animal research, creation of quality reports and audit information. The system was based on Microsoft .Net architecture, SQL Server and Sharepoint.

**Gensa Contribution** - Worked on a collaborative team designing the system and documenting technical specifications. Gensa developed solutions to basic architecture and design problems.

### California Office of Statewide Health Planning and Development (OSHPD)

The Project – OSHPD was concerned that employees were not adequately trained and tested on information security. Staff was also geographically dispersed and they wanted a solution that would cut travel costs.

**Gensa Contribution** - Gensa analyzed information security policies, designed and developed a web/computer-based training application that is accessible by employees on OSHPD’s Intranet and provides employees with training on information security and the department.

### California Department of Alcohol and Drug Programs

The Project – The Prevention Activities Group had a requirement to report how Federal funds were utilized by service providers. They were receiving 7 page paper reports from several hundred providers and were looking for a way to streamline the process and obtain more accurate data.

**Gensa Contribution** – Gensa developed a 3-tier web-system (PADS) for the providers to enter and QA the data. PADS generated the reports for Federal reporting as well as for data quality checking. The data model was designed so that yearly modifications to questions would not require program modifications.

---

## Clients

Government	Corporate
Department of Veteran’s Affairs	Northrop Grumman IT
Office of Statewide Health Planning	University of California SF Medical Center
Dept of Alcohol and Drug Pgms	Canine Companions for Independence
DIR Division of Occupation Safety and Health	SAIC
CA Dept of Health Services	Anteon
California Highway Patrol	Booz-Allen & Hamilton
CA. Dept of Transportation	The Davidson Institute for Client Development
CA State Treasurer’s Office	The Jelly Belly Company

